

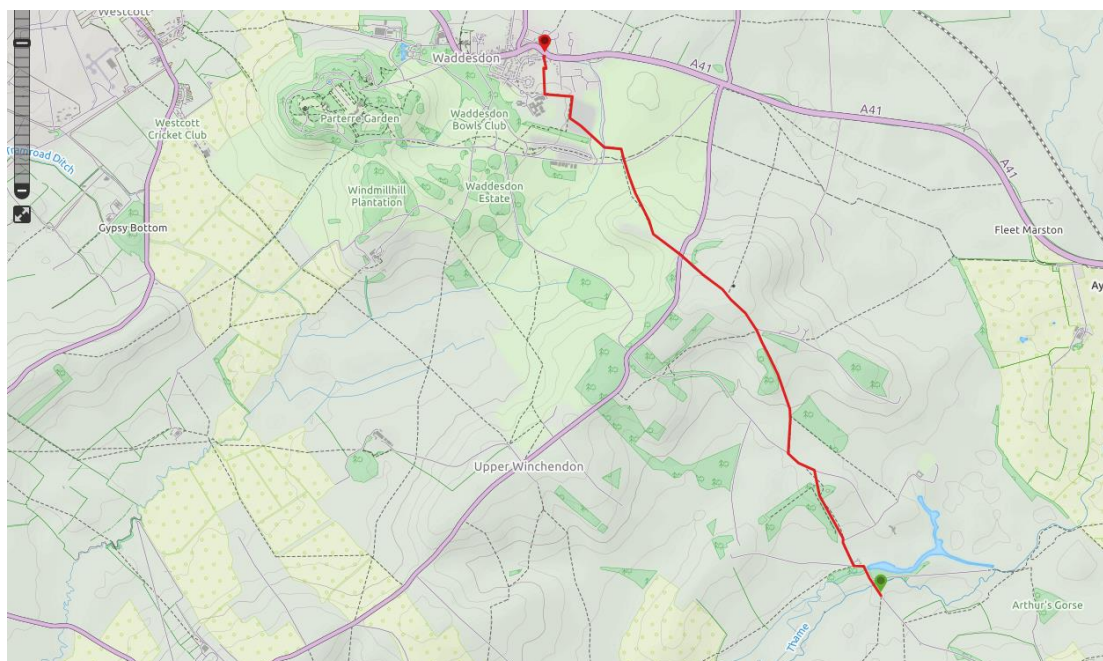
2A Aylesbury Ring : Waddesdon - Eythrope

We have divided the 32 miles of the Aylesbury Ring into six Stages of around five miles each (BFWI Walks 2a-2f). Within each Stage are two or three linked walks that leave and arrive at a village, town or on a bus route, and are probably short enough to allow you to do a there-and-back walk if transport is an issue.

With the exception of this first Stage, written Routes are not given here as the Aylesbury Ring is so clearly waymarked as such, or as the North Bucks Way for part of its route.

You can download an overview map and information sheet [here](#) or via the Ramblers Association website at www.aylesbury-ramblers.org.uk/the-aylesbury-ring

Waddesdon : Eythrope



The Aylesbury Ring is clearly signposted out of Waddesdon, leaving either from Baker Street or from behind School Lane.

Skirt the playing fields, cross arable land and a small area of woodland to cross Warmstone lane. Once over this lane, the Ring turns right to meet and cross over the Waddesdon Greenway. At this point the path is well trodden and over fields.

Passing stables and farm buildings to your left you emerge onto Waddesdon Hill (made-up road) which you cross to again pick up the Aylesbury Ring opposite.

Later, the Midshires Way will join this route from your left.

Later still at a fork in the road keep to the right hand track in front of a farmhouse. At the next fork, keep left to take a look at Eythrope (tours of the Rothschild walled gardens must be booked in advance) or keep straight on to cross the River Thames and complete the Stage.