

2c. Aylesbury Ring : Kimblewick Gt Kimble Butlers Cross Wendover

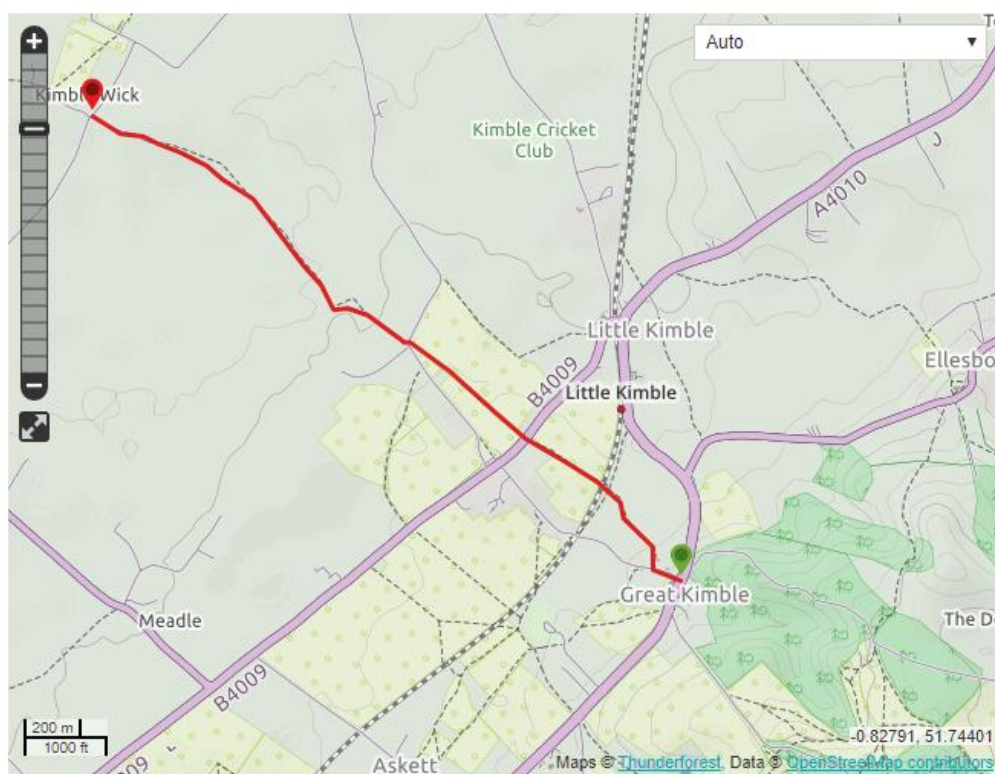
5.2 miles

We have divided the 32 miles of the Aylesbury Ring into six Stages of around five miles each (BFWI Walks 2a-2f). Within each stage are two or three linked walks that leave and arrive at a village, town or on a bus route, or are short enough to allow you to do a there-and-back walk if transport is an issue.

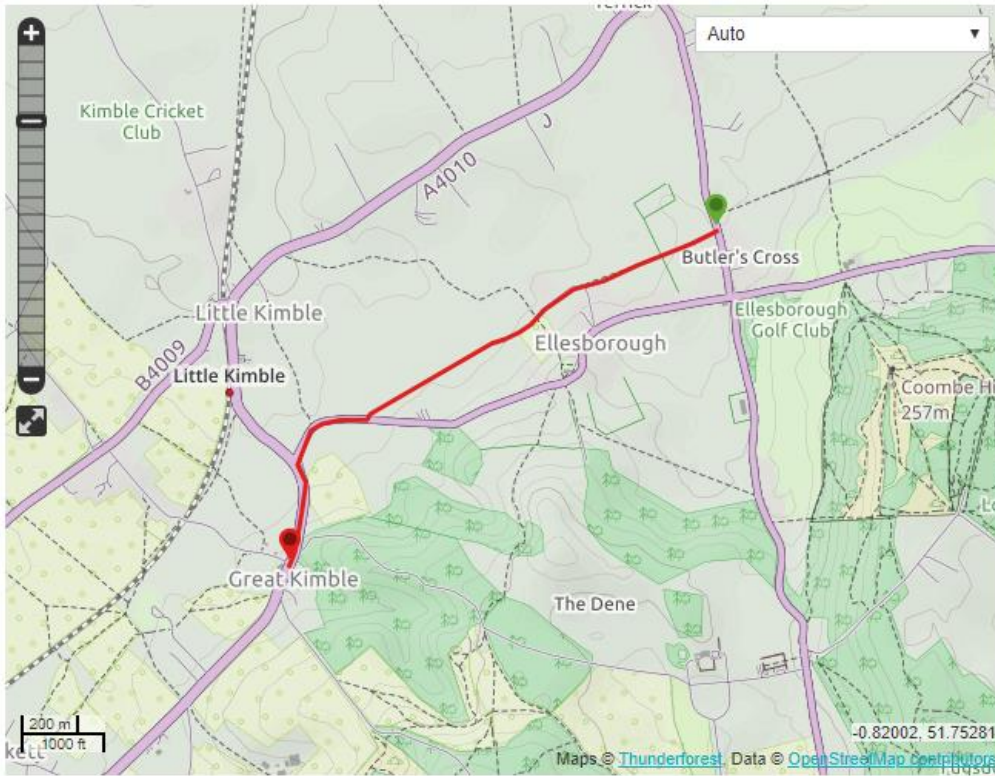
With the exception of the first Stage, written Routes are not given here as the Aylesbury Ring is so clearly waymarked as such, or as the North Bucks Way for part of its route.

You can download an overview map and information sheet [here](#) or via the Ramblers Association website at www.aylesbury-ramblers.org.uk/the-aylesbury-ring

Kimblewick : Great Kimble



Great Kimble : Butler's Cross



Butler's Cross : Wendover

